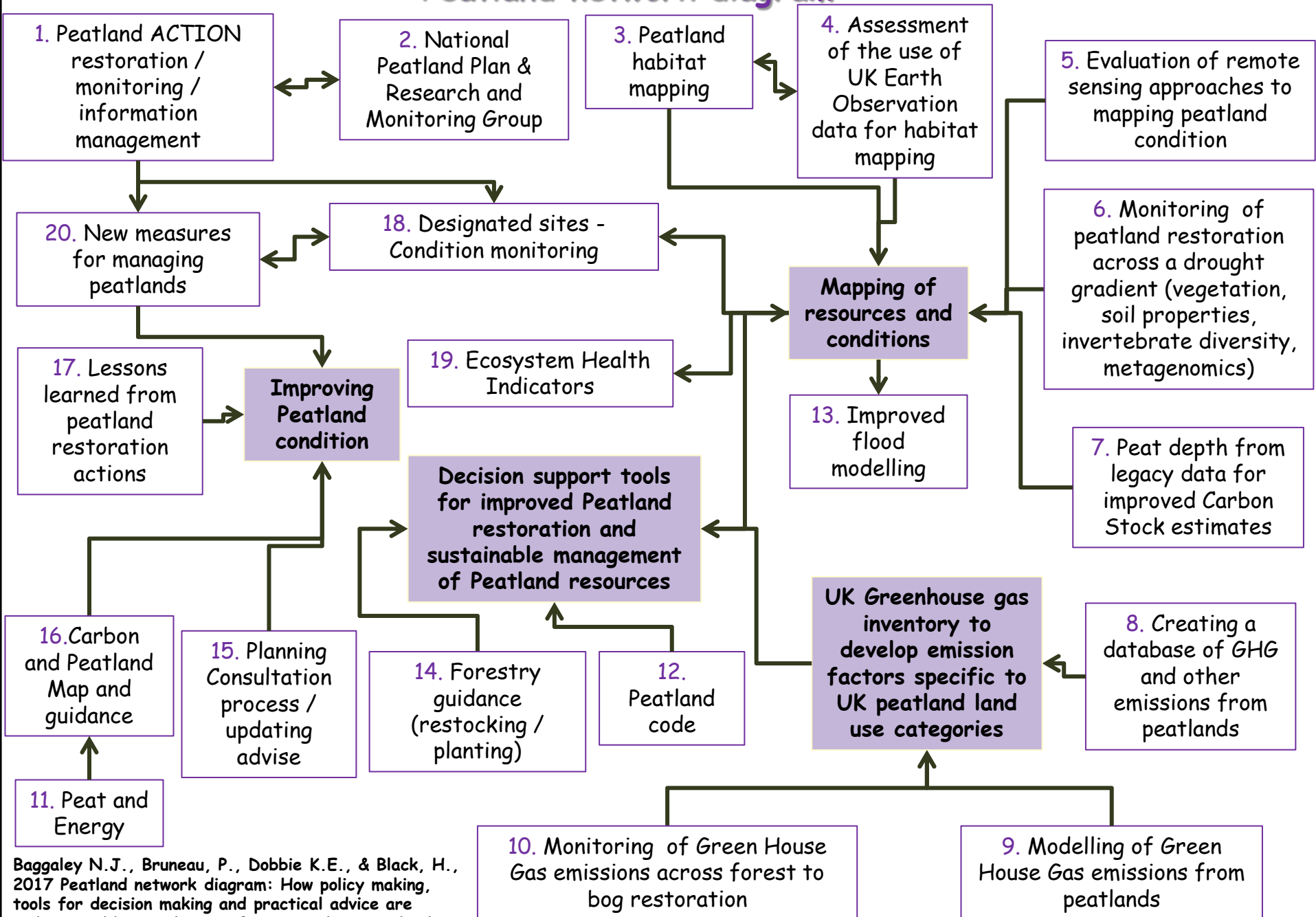


Peatland network diagram



**Baggaley N.J., Bruneau, P., Dobbie K.E., & Black, H.,
2017 Peatland network diagram: How policy making,
tools for decision making and practical advice are
underpinned by novel scientific research in Scotland
Version 1: © SoilMAP**

References:

- [1] Peatland ACTION: www.nature.scot/climate-change/taking-action/peatland-action
- [2] National Peatland Plan: www.nature.scot/scotlands-national-peatland-plan-working-our-future
- [3] Trial mapping of upland EUNIS habitats using stereo colour near-infrared aerial imagery: www.nature.scot/snh-commissioned-report-767-trial-mapping-upland-annex-i-and-eunis-habitats-using-stereo-colour-near
- [4] Assessment of the use of UK Earth Observation data for habitat mapping: www.jncc.defra.gov.uk
- [4, 5, 6, 7, 8, 9, 10] Current projects funded by the Scottish Government's Rural and Environmental Science and Analytical Services Division Strategic Research Programme 2016-2021: www2.gov.scot/Topics/Research/About/EBAR/StrategicResearch/strategicresearch2016-21/srp2016-21
- [11] Peatland and Energy Policy Statement: www.gov.scot/Topics/Business-Industry/Energy/Energy-sources/19185
- [12] Peatland Code: www.iucn-uk-peatlandprogramme.org/funding-finance/peatland-code
- [13] SEPA flooding research and development: www.sepa.org.uk/environment/water/flooding/developing-our-knowledge/
- [14] Forestry guidance peatland habitats (Scotland) advice: www.forestry.gov.scot/publications/2-forests-and-peatland-habitats/
- [16] Carbon and peatland map: www.soils.environment.gov.scot/maps/thematic-maps/carbon-and-peatland-2016-map/
- [17] S.J Chapman, R.R.EArtz, A. Moss, [2015] Set of CXC adaptation indicators for peatlands. NB11 Extent of key habitats: deep peat; NB13 Condition of key habitats: area of modified deep peat soils; NB18 annual greenhouse gas (GHG) emissions from degraded peatlands; NB22a Peatland restoration area: www.climateexchange.org.uk/media/2400/cxc_adaptation_indicators_full_list.pdf
- [18] SNH Designated sites conditions monitoring: www.nature.scot/professional-advice/safeguarding-protected-areas-and-species/protected-areas/site-condition-monitoring
- [19] Ecosystems Health Indicators Scottish biodiversity strategy: www.environment.gov.scot/our-environment/state-of-the-environment/ecosystem-health-indicators/
- [20] Guidance and best practices for restorations: www.nature.scot/climate-change/taking-action/peatland-action/peatland-action-project-resources