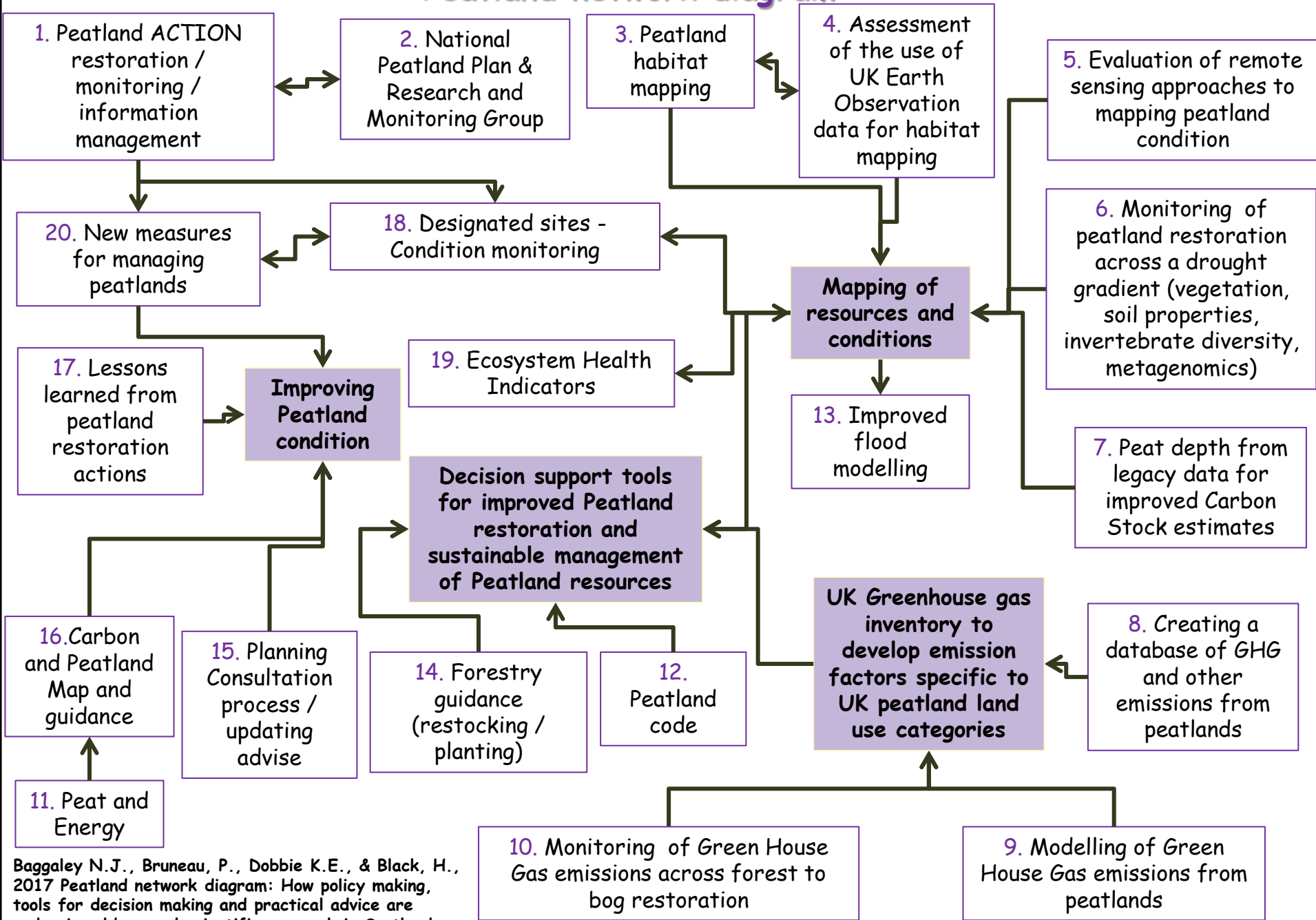


Peatland network diagram



References:

- [1] Peatland ACTION: <http://www.snh.gov.uk/climate-change/taking-action/carbon-management/peatland-action/information-for-applicants/>
- [2] National Peatland Plan: <http://www.snh.gov.uk/climate-change/taking-action/carbon-management/peatland-action/national-peatland-plan/>
- [3] Trial mapping of upland EUNIS habitats using stereo colour near-infrared aerial imagery: <http://www.snh.gov.uk/publications-data-and-research/publications/search-the-catalogue/publication-detail/?id=2454>
- [4] Assessment of the use of UK Earth Observation data for habitat mapping <http://jncc.defra.gov.uk/page-5563>
- [4, 5, 6, 7, 9, 10] Current projects funded by the Scottish Government's Rural and Environmental Science and Analytical Services Division Strategic Research Programme 2016-2021: <http://www.gov.scot/Resource/0050/00504329.pdf> & <http://www.gov.scot/Resource/0050/00504327.pdf>
- [11] Peatland and Energy Policy Statement: <http://www.gov.scot/Topics/Business-Industry/Energy/Energy-sources/19185>
- [12] Peatland Code: <http://www.iucn-uk-peatlandprogramme.org/peatland-code>
- [13] SEPA flooding research and development: <http://www.sepa.org.uk/environment/water/flooding/developing-our-knowledge/>
- [14] Forestry guidance Peatland habitats (Scotland) advice: <http://scotland.forestry.gov.uk/supporting/strategy-policy-guidance/soil-and-water-management/peatland-habitats>
- [16] Carbon and peatland map: <http://www.snh.gov.uk/planning-and-development/advice-for-planners-and-developers/soils-and-development/cpp/>
- [17] S.J Chapman, R.R.EArtz, A. Moss, [2015] Set of CXC adaptation indicators for peatlands. **NB 11** Extent of key habitats: deep peat; **NB13** Condition of key habitats: area of modified deep peat soils; **NB18** annual greenhouse gas (GHG) emissions from degraded peatlands; **NB22a** Peatland restoration area: http://www.climatechange.org.uk/files/4114/7738/6041/CXC_Adaptation_indicators_full_list.pdf
- [18] SNH Designated sites conditions monitoring: <http://www.snh.gov.uk/protecting-scotlands-nature/protected-areas/site-condition-monitoring/>
- [19]-Ecosystems Health Indicators Scottish biodiversity strategy <http://www.biodiversityscotland.gov.uk/doing/scottish-biodiversity-governance/science-and-technical-group/>
- [20]- Guidance and best practices for restorations: <http://www.snh.gov.uk/climate-change/taking-action/carbon-management/peatland-action/peatland-action-videos/>